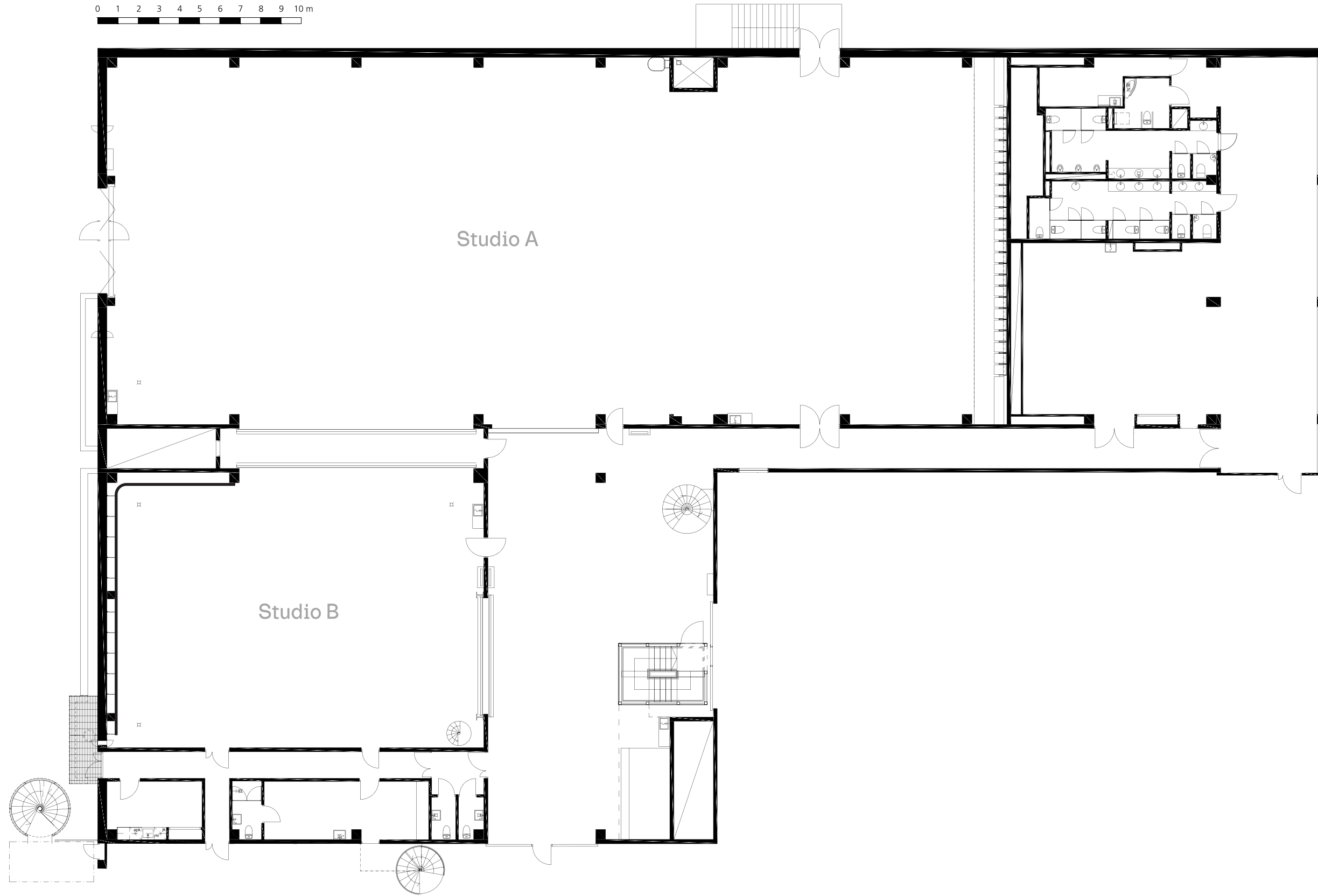
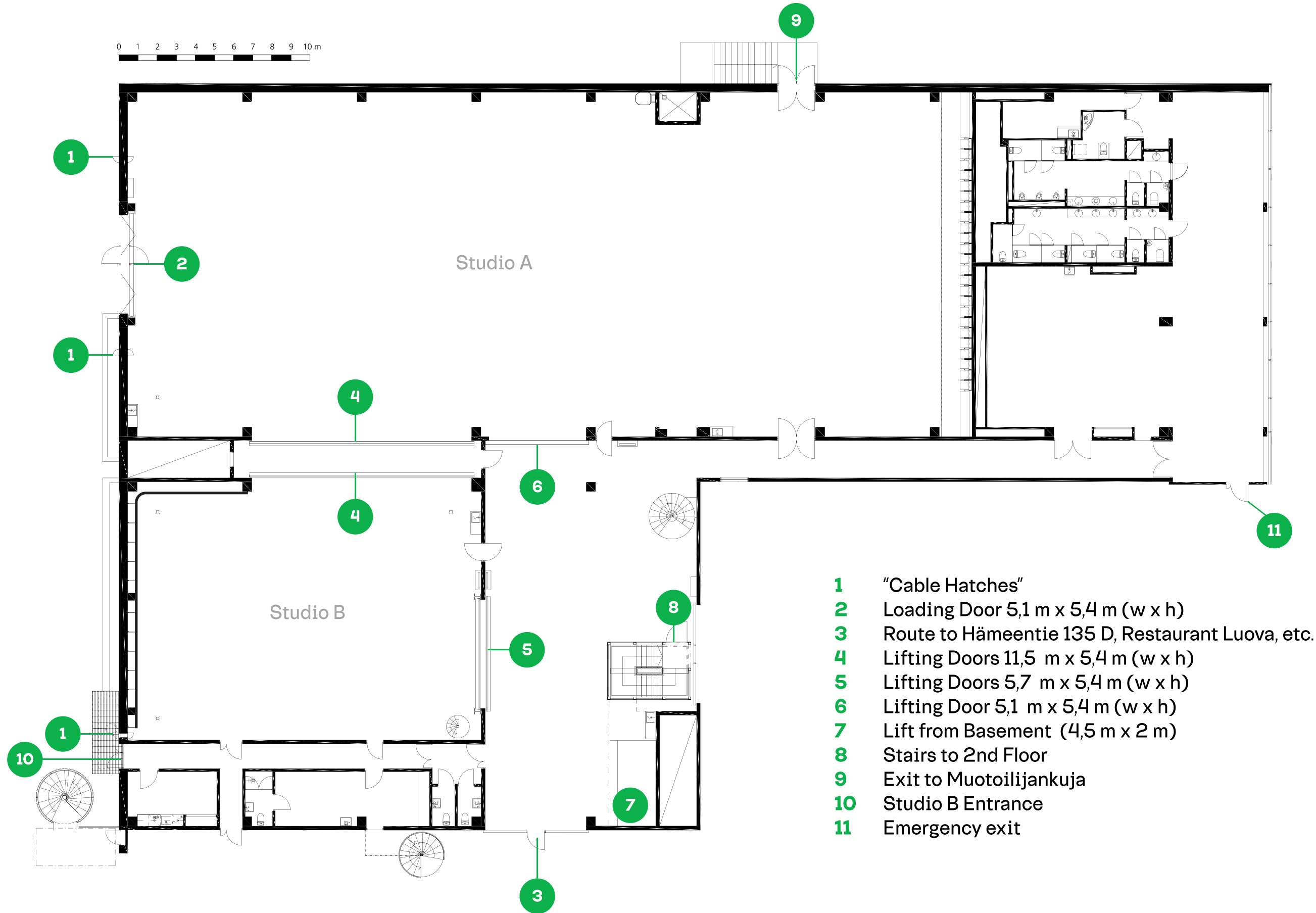


# Ground Floor

0 1 2 3 4 5 6 7 8 9 10m

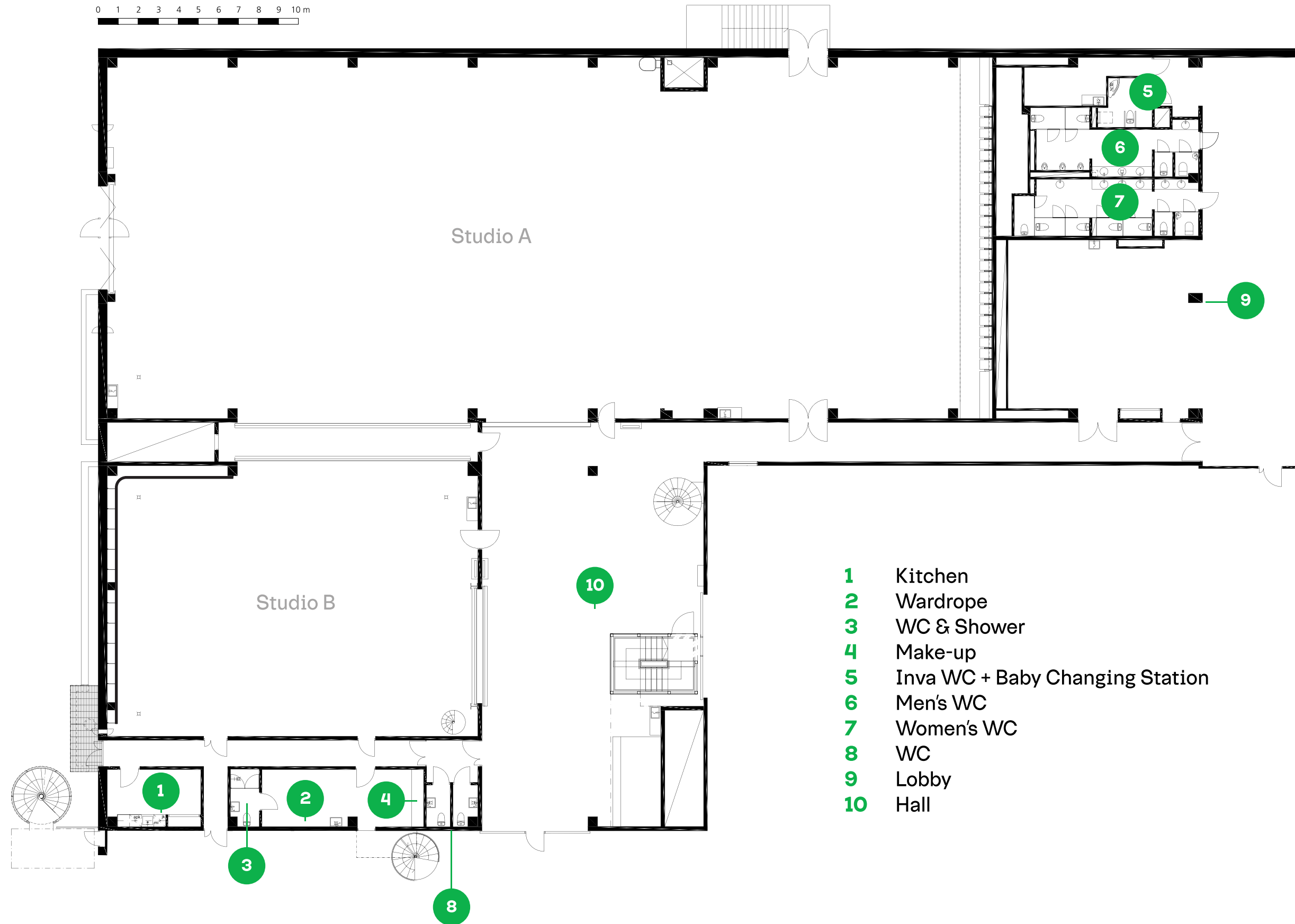


# Ground Floor Entrances & Doors



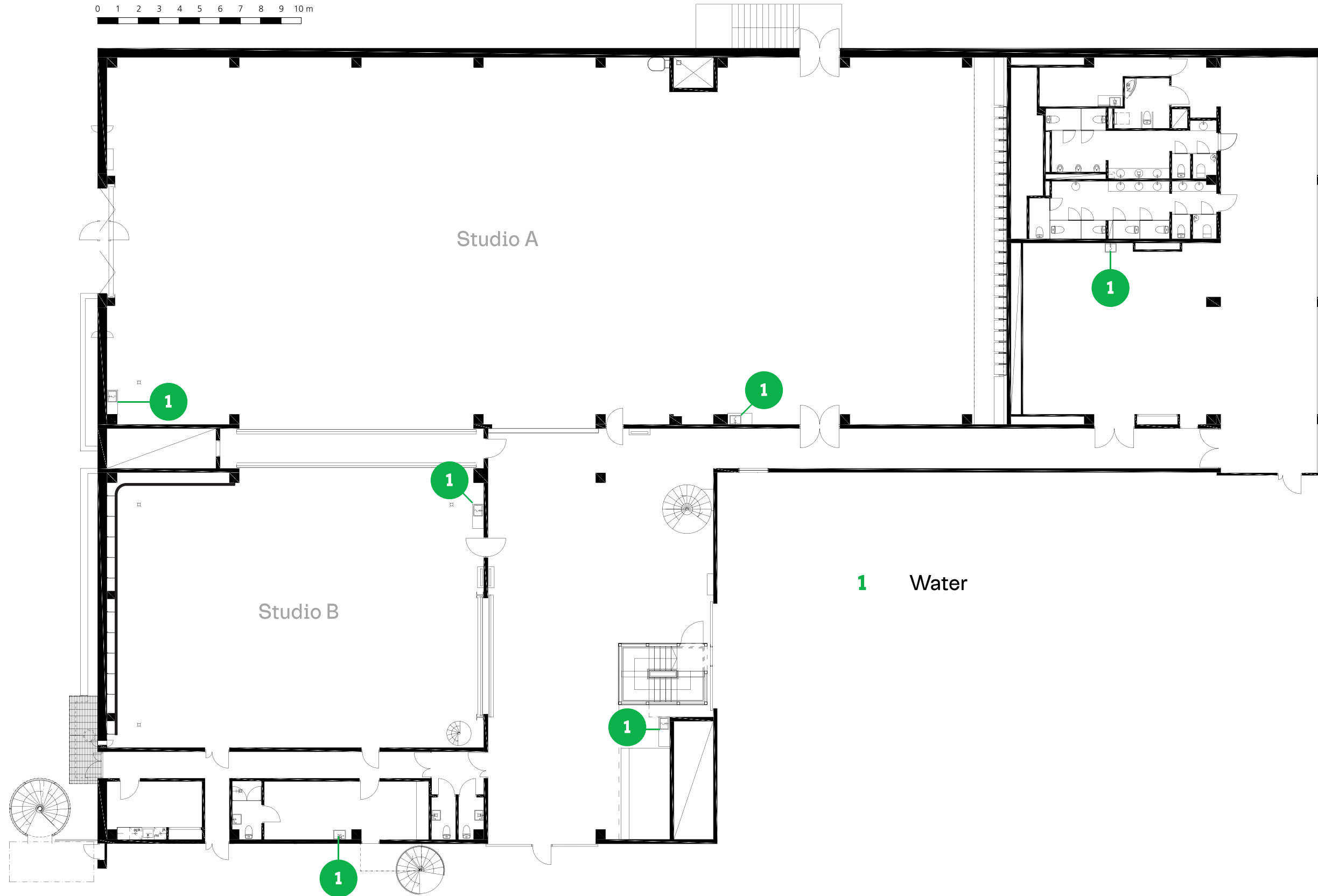
- 1** "Cable Hatches"
- 2** Loading Door 5,1 m x 5,4 m (w x h)
- 3** Route to Hämeentie 135 D, Restaurant Luova, etc.
- 4** Lifting Doors 11,5 m x 5,4 m (w x h)
- 5** Lifting Doors 5,7 m x 5,4 m (w x h)
- 6** Lifting Door 5,1 m x 5,4 m (w x h)
- 7** Lift from Basement (4,5 m x 2 m)
- 8** Stairs to 2nd Floor
- 9** Exit to Muotoilijankuja
- 10** Studio B Entrance
- 11** Emergency exit

# Ground Floor Rooms & Facilities



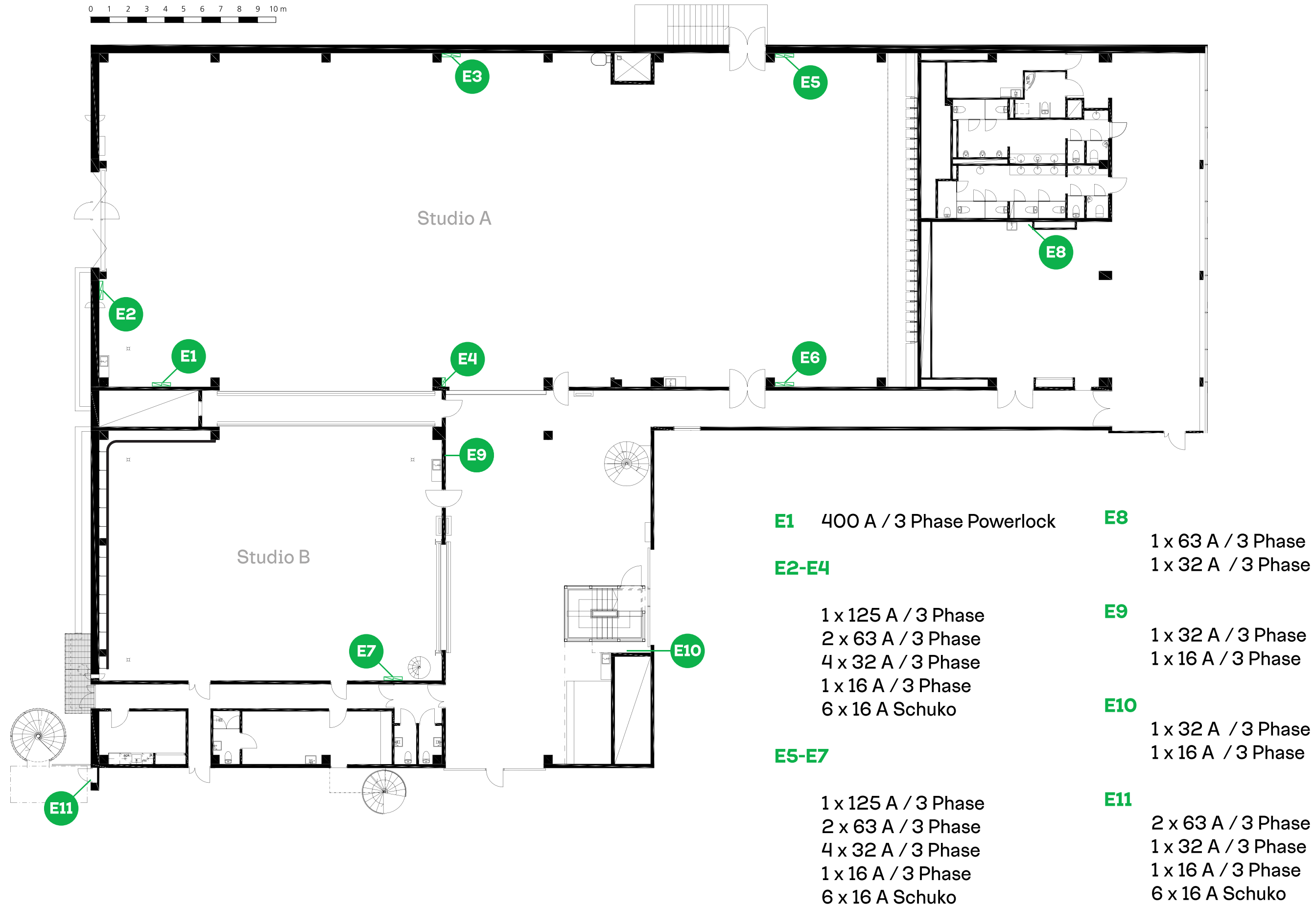
# Ground Floor Water

0 1 2 3 4 5 6 7 8 9 10m

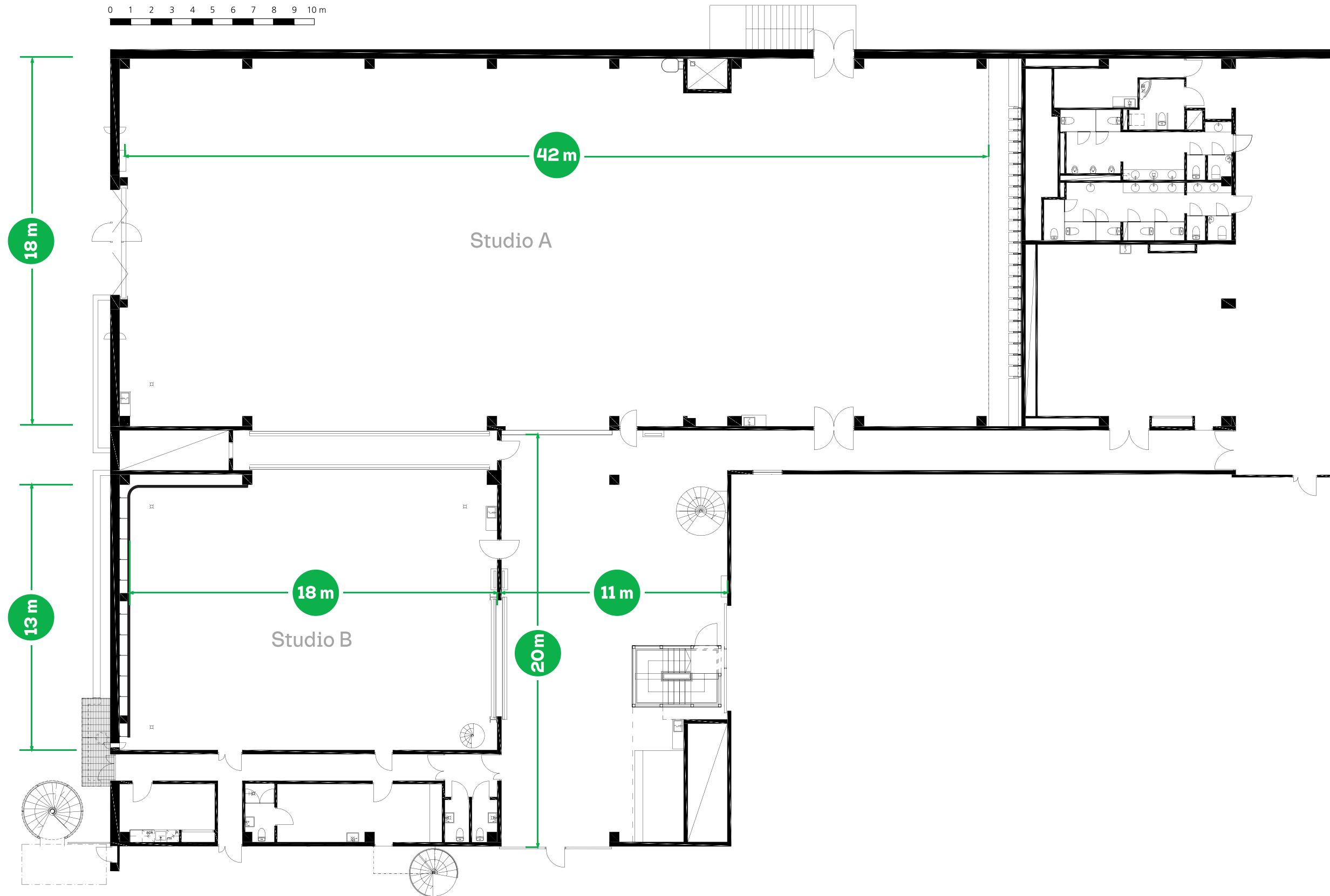


# Ground Floor Electrical Distribution

0 1 2 3 4 5 6 7 8 9 10m

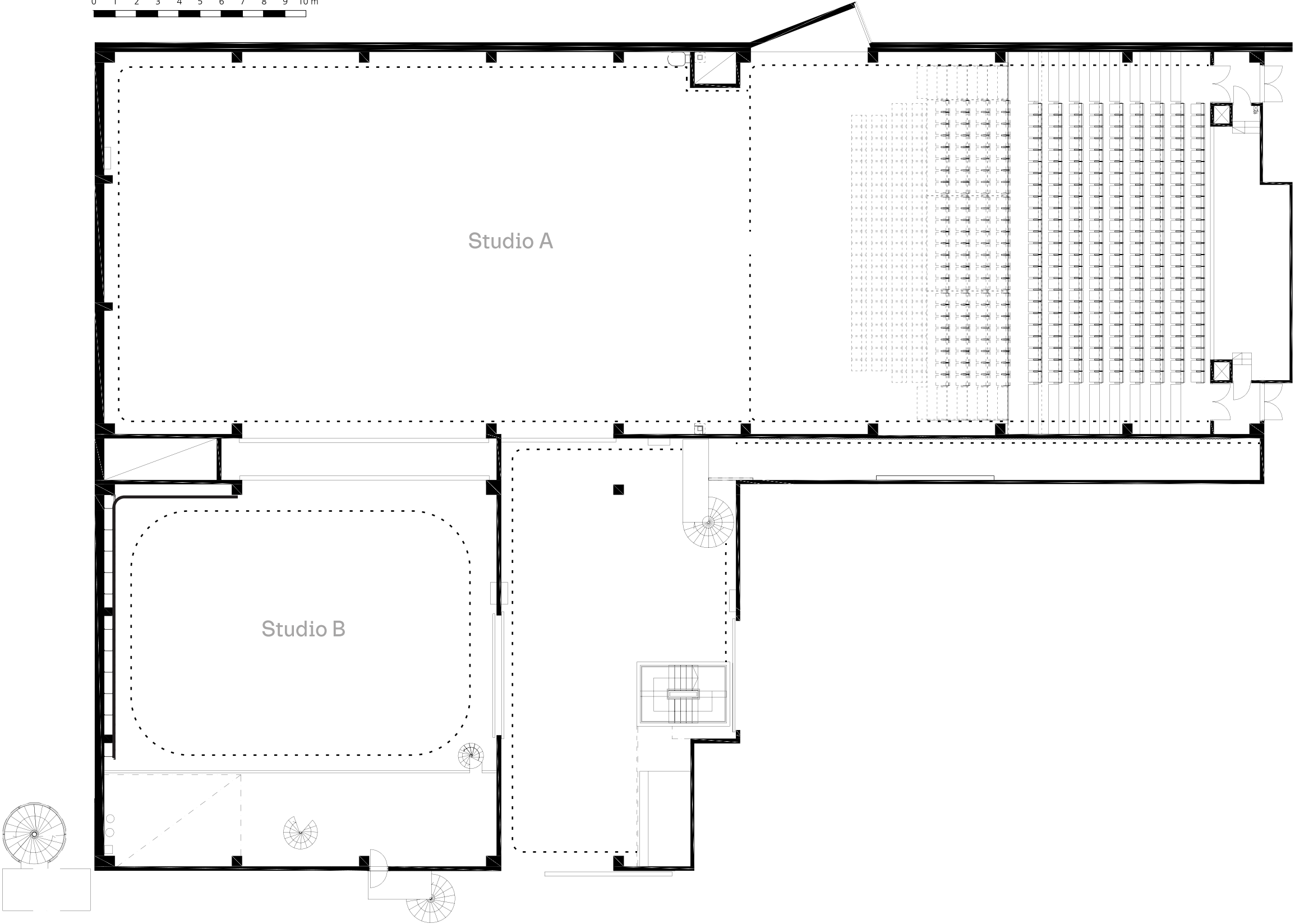


# Ground Floor Dimensions

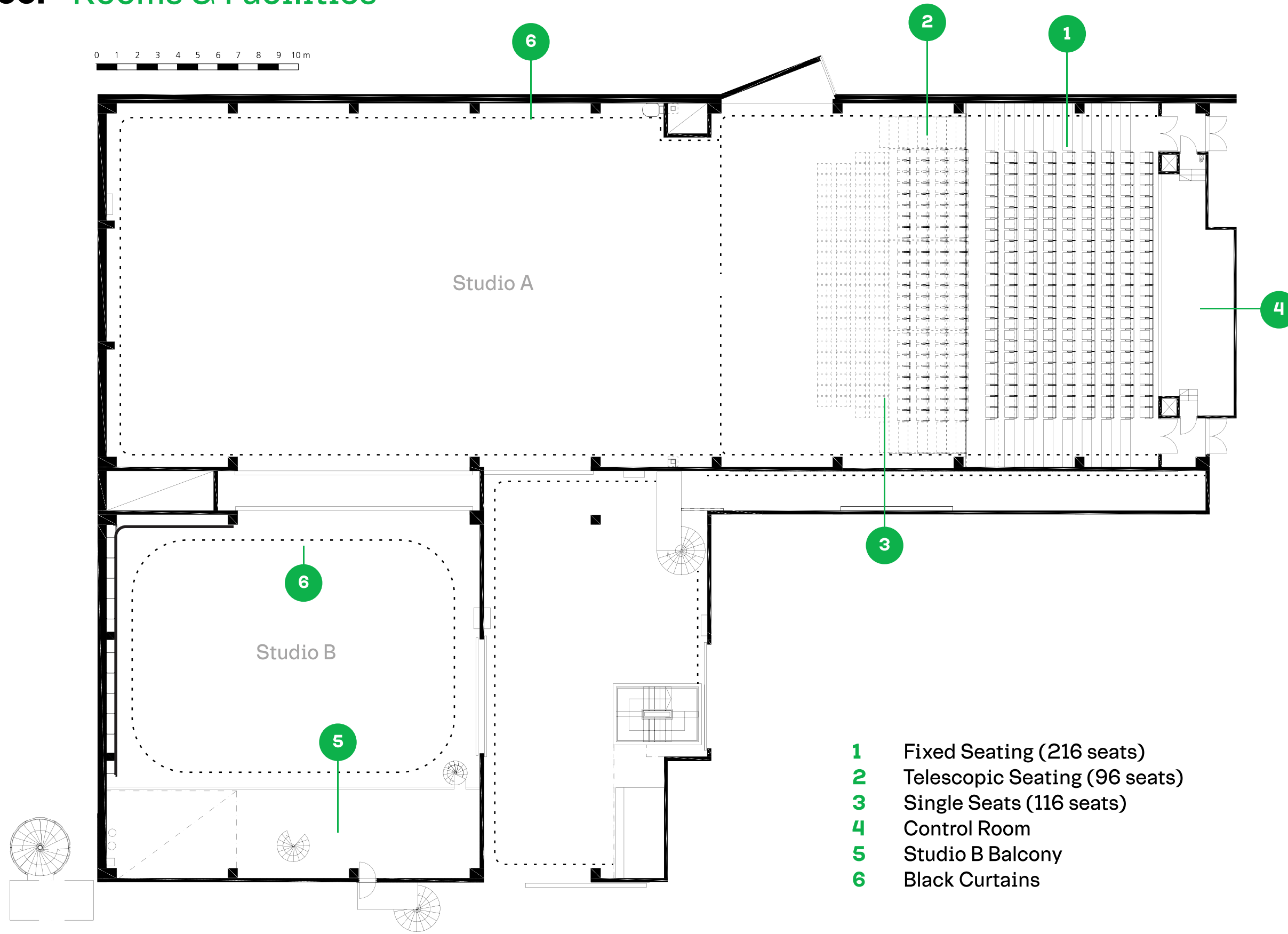


# 1st Floor

0 1 2 3 4 5 6 7 8 9 10m



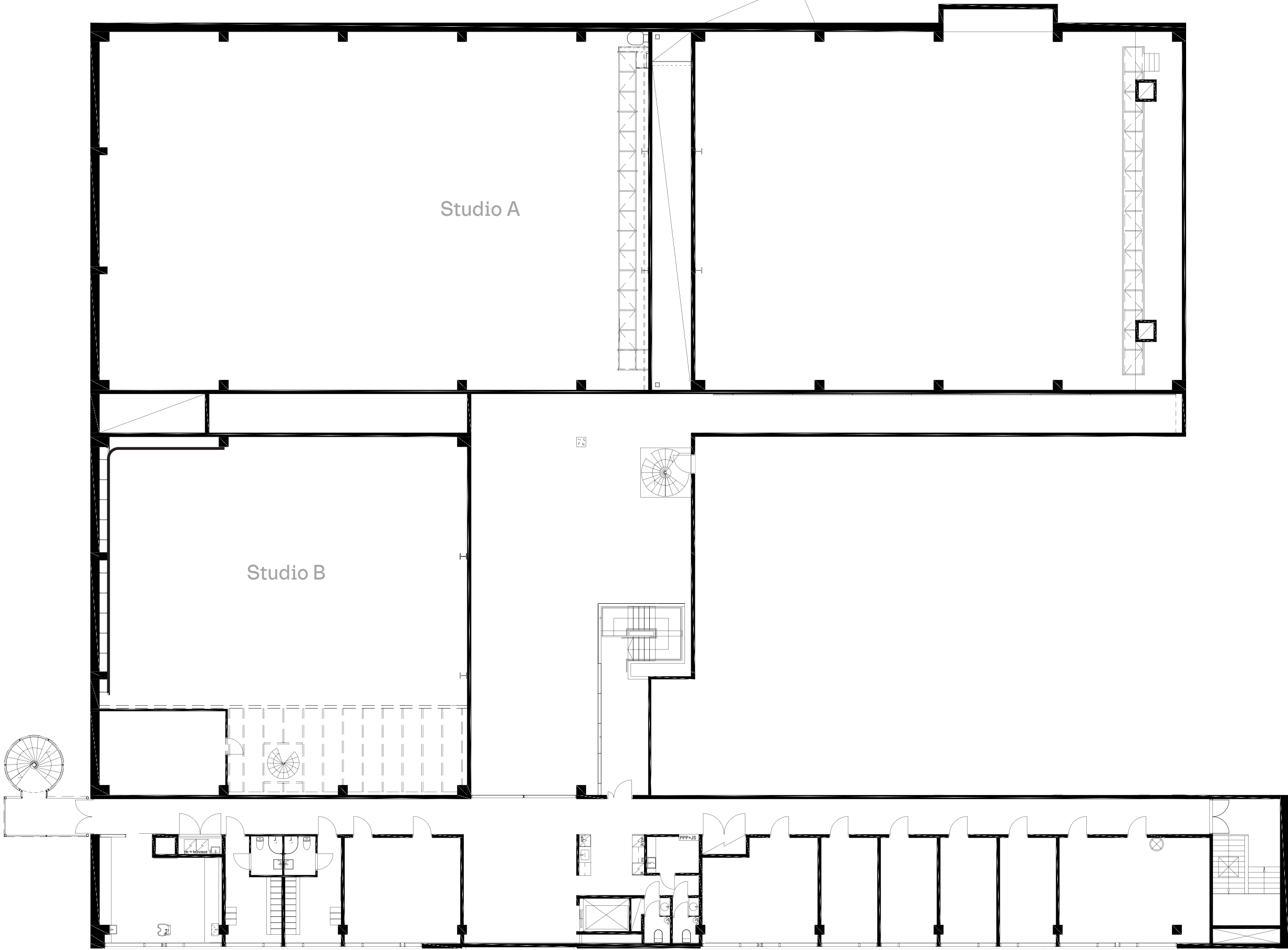
# 1st Floor Rooms & Facilities





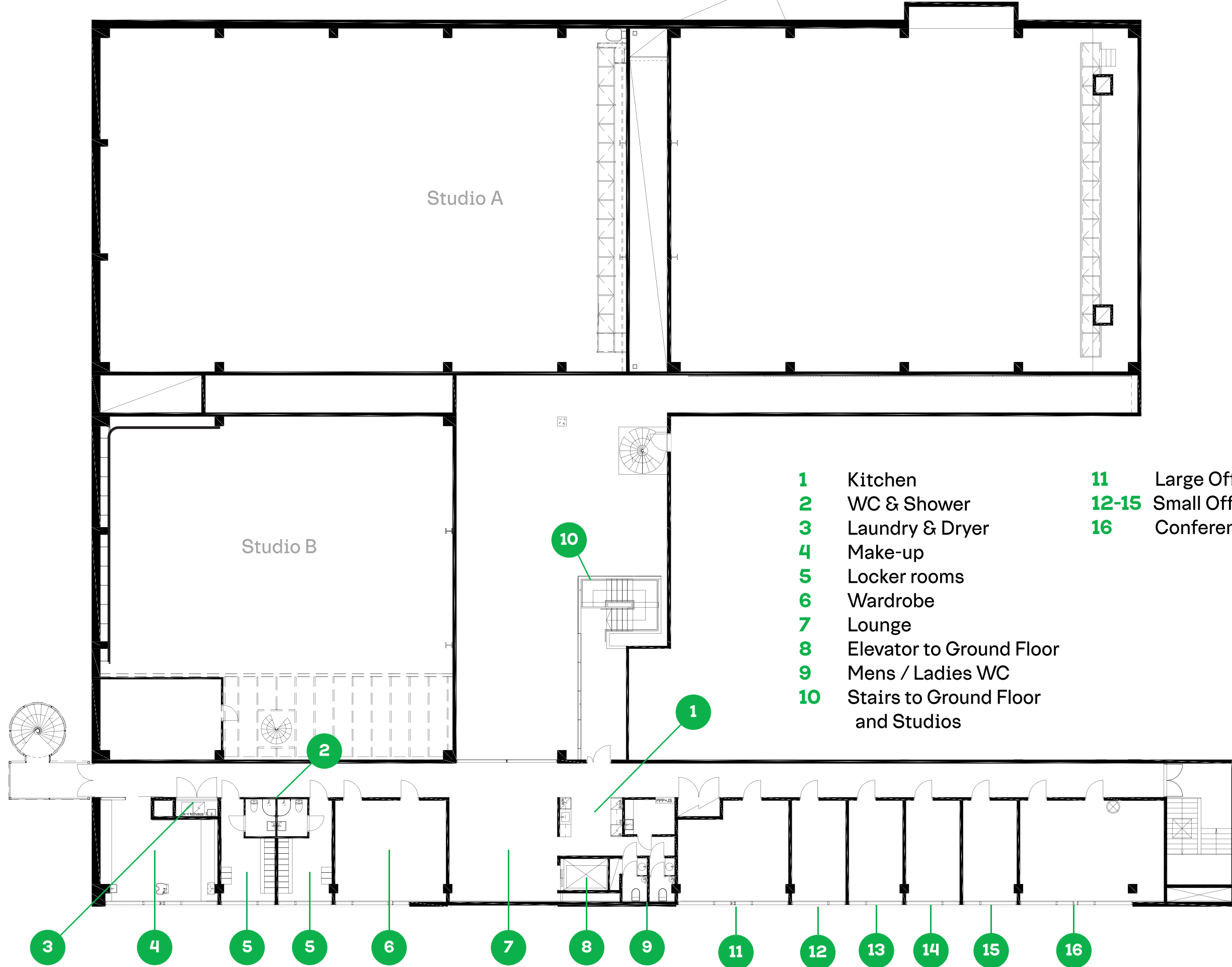
# 2nd Floor

0 1 2 3 4 5 6 7 8 9 10m



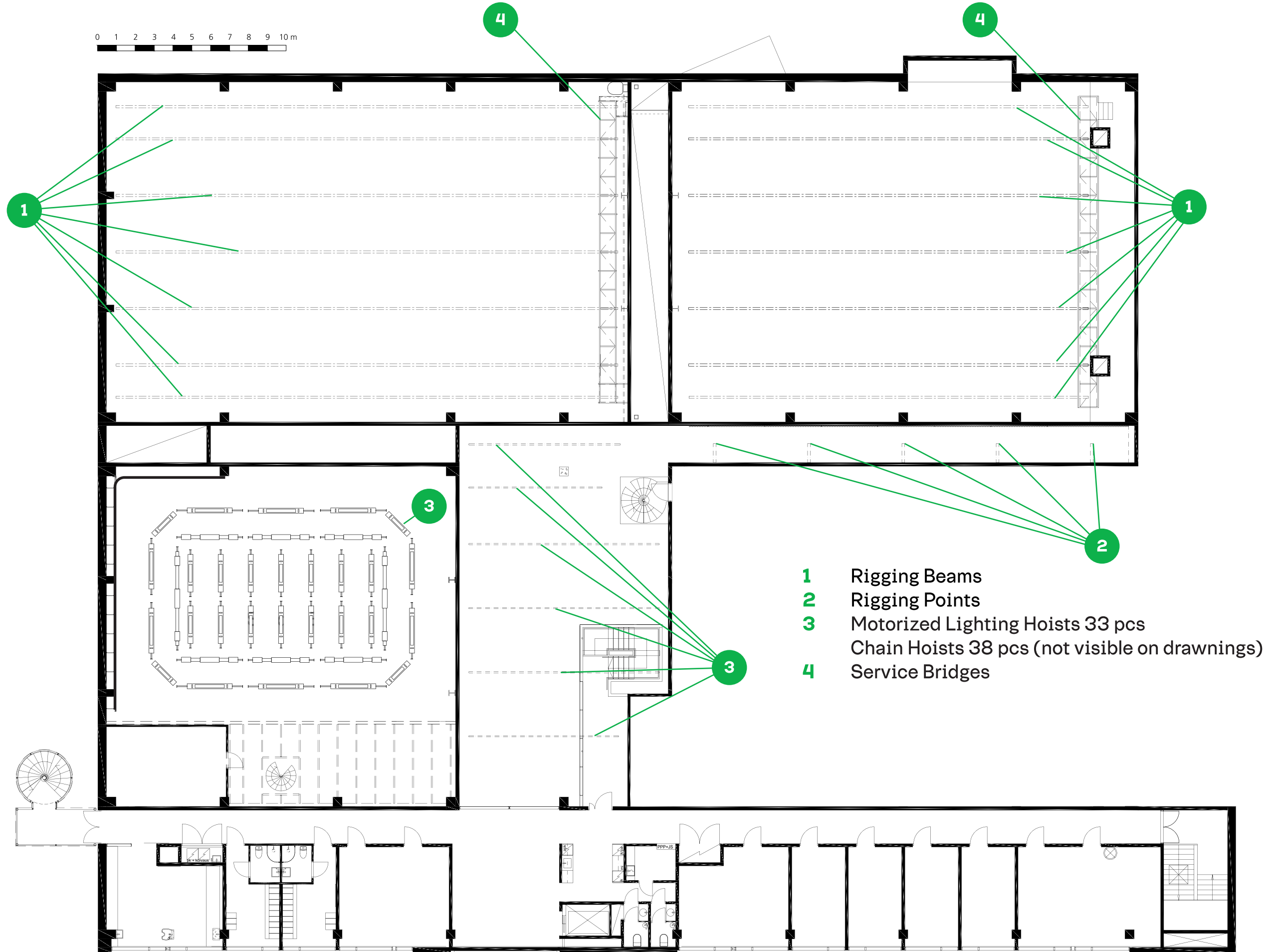
# 2nd Floor Rooms & Facilities

0 1 2 3 4 5 6 7 8 9 10m



- 1 Kitchen
- 2 WC & Shower
- 3 Laundry & Dryer
- 4 Make-up
- 5 Locker rooms
- 6 Wardrobe
- 7 Lounge
- 8 Elevator to Ground Floor
- 9 Mens / Ladies WC
- 10 Stairs to Ground Floor and Studios
- 11 Large Office Room
- 12-15 Small Office Rooms
- 16 Conference Room

# 2nd Floor Rigging Points & Lighting Hoists



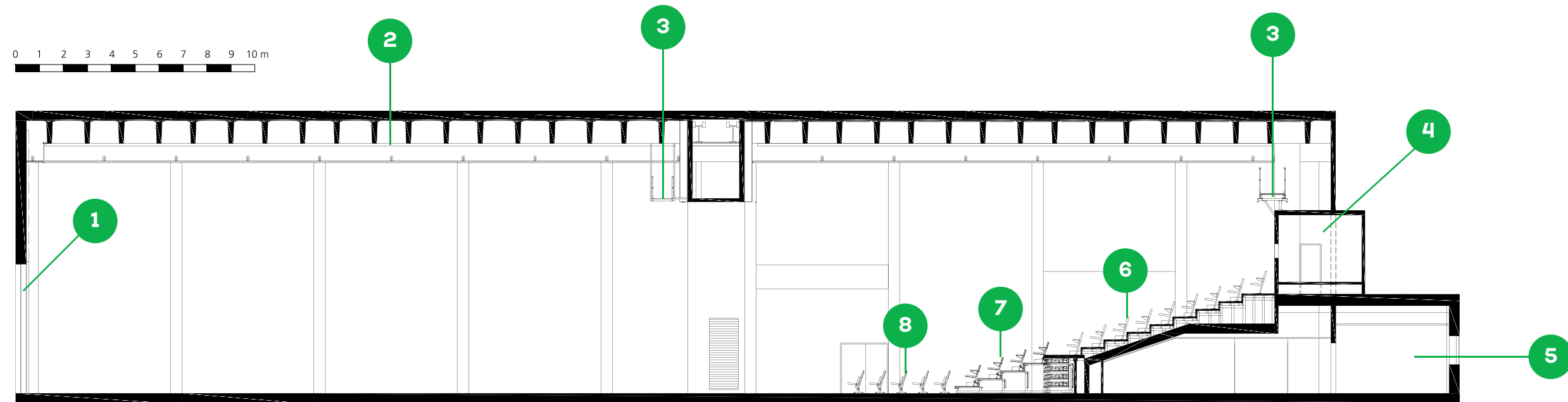
- 1** Rigging Beams
- 2** Rigging Points
- 3** Motorized Lighting Hoists 33 pcs  
Chain Hoists 38 pcs (not visible on drawings)
- 4** Service Bridges

# Studio A Sideview

0 1 2 3 4 5 6 7 8 9 10m



# Studio A Sideview Rooms & Facilities



- 1** Loading door 5,1 m x 5,4 m (w x h)
- 2** Rigging Beams
- 3** Service Bridges
- 4** Control Room
- 5** Lobby, Toilets, etc.
- 6** Fixed Seating (216 seats)
- 7** Telescopic Seating (96 seats)
- 8** Single Seats (116 seats)

# Studio A Sideview Dimensions

0 1 2 3 4 5 6 7 8 9 10 m

